



MATERIALS

Bernat® Velvet™ (10.5 oz/300 g; 315 yds/288 m)

Main Color (MC) Quiet Pink (32013) **5 balls**

Contrast A Terracotta Rose (32017) **3 balls**

Size U.S. K/10½ (6.5 mm) hook **or size needed to obtain gauge.**



CROCHET | SKILL LEVEL: **INTERMEDIATE**

ABBREVIATIONS

Approx = Approximately

Ch = Chain(s)

Dc = Double crochet

Hdc = Half double crochet

Rem = Remaining

Rep = Repeat

Rnd = Round

RS = Right side

Sc = Single crochet

Sl st = Slip stitch

Sp = Space

Tog = Together

WS = Wrong side

Yoh = Yarn over hook

MEASUREMENTS

Approx 50" x 59¼" [127 x 150.5 cm].

GAUGE

1 Ogee Motif = 5¼" x 8¼" [13 x 21 cm].

INSTRUCTIONS

Ogee Motif (make 98)

See diagram on page 3.

With A, ch 8. Join with sl st to first ch to form ring.

Rnd 1: (RS). Ch 3 (counts as 1 dc). 2 dc in ring. Ch 2. (3 dc in ring. Ch 2) 5 times. Join with sl st to top of ch 3. Fasten off.

Rnd 2: Join MC with sl st in first ch-2 sp. Ch 3 (counts as dc). (2 dc. Ch 2. 3 dc) in same ch-2 sp. Ch 1. (Skip next 3 dc. 5 dc in next ch-2 sp) twice. Ch 1. Skip next 3 dc. (3 dc. Ch 2. 3 dc) in next ch-2 sp.

Ch 1. (Skip next 3 dc. 5 dc in next ch-2 sp) twice. Ch 1. Join with sl st to top of ch 3.

Rnd 3: Sl st in each of next 2 dc and next ch-2 sp. Ch 3 (counts as 1 dc). (2 dc. Ch 4. 1 dc in 4th ch from hook. 3 dc) in same ch-2 sp. Skip next 3 dc. 3 dc in next ch-1 sp. 1 hdc in each of next 10 dc. 3 dc in next ch-1 sp. Skip next 3 dc. (3 dc. Ch 4. 1 dc in 4th ch from hook. 3 dc) in next ch-2 sp. Skip next 3 dc. 3 dc in next ch-1 sp. 1 hdc in each of next 10 dc. 3 dc in next ch-1 sp. Skip next 3 dc. Join with sl st to top of ch 3. Fasten off.

Short Half Ogee Motif (make 14)
See diagram.

Note: To join new color, work to last loops on hook of previous color. Yoh with new color, draw through rem loops and proceed with new color.

With A, ch 5. Join with sl st to first ch to form ring.

Row 1: (RS). Ch 5 (counts as 1 dc. Ch 2). (3 dc in ring. Ch 2) twice. 1 dc in ring. Join MC. Break A. Turn.

Row 2: With MC, ch 3 (counts as 1 dc). 4 dc in next ch-2 sp. Ch 1. Skip next 3 dc. (3 dc. Ch 2. 3 dc) in next ch-2 sp. Ch 1. Skip next 3 dc. 4 dc in next ch-2 sp. 1 dc in 3rd ch of ch 5. Turn.

Row 3: Ch 2 (counts as 1 hdc). 1 hdc in each of next 4 dc. 3 dc in next ch-1 sp. Skip next 3 dc. (3 dc. Ch 4. 1 dc in 4th ch from hook. 3 dc) in next ch-2 sp. Skip next 3 dc. 3 dc in next ch-1 sp. 1 hdc in each of next 5 dc. Fasten off.

Long Half Ogee Motif (make 12)
See diagram.

Note: To join new color, work to last loops on hook of previous color. Yoh with new color, draw through rem loops and proceed with new color.

With A, ch 6. Join with st st to first ch to form a ring.

Row 1: (RS). Ch 3 (counts as 1 dc). 3 dc in ring. (Ch 2. 3 dc in ring) twice. 1 dc in ring. Join MC. Break A. Turn.

Row 2: With MC, ch 3 (counts as 1 dc). 3 dc in first dc. Ch 1. (Skip next 3 dc. 5 dc in next ch-2 sp) twice. Ch 1. Skip next 3 dc. 4 dc in top of ch 3. Turn.

Row 3: Ch 6. 1 hdc in 3rd ch from hook. 3 dc in first dc. Skip next 3 dc. 3 dc in next ch-1 sp. 1 hdc in each of next 10 dc. 3 dc in next ch-1 sp. Skip next 3 dc. (3 dc. Ch 3. 1 hdc in 3rd ch from hook. 1 dc) in top of ch 3. Fasten off.

Quarter Ogee Motif (make 4)
See diagram.

Note: To join new color, work to last loops on hook of previous color. Yoh with new color, draw through rem loops and proceed with new color.

With A, ch 4. Join with sl st to first ch to form ring.

Row 1: Ch 5 (counts as 1 dc. Ch 2). 3 dc in ring. Ch 2. 1 dc in ring. Join MC. Break A. Turn.

Row 2: With MC, ch 3 (counts as 1 dc). 3 dc in next ch-2 sp. Ch 1.

Skip next 3 dc. 3 dc in next ch-2 sp. 1 dc in 3rd ch of ch 5. Turn.

Row 3: Ch 2 (counts as 1 hdc). 1 hdc in each of next 4 dc. 3 dc in next ch-1 sp. Skip next 3 dc. (3 dc. Ch 3. 1 hdc in 3rd ch from hook. 1 dc) in top of ch 3. Fasten off.

FINISHING

Joining Motifs: With A, join Motifs tog as shown in Assembly Diagram with rows of sc on RS to create ridge detail between each Motif. Offset each Motif and join tog vertically from bottom edge to top edge. First st on top right of Motif should align with 13th st at bottom left of next Motif **OR** st on top left of Motif should align with 13th st at bottom right of next Motif depending on join as shown in diagram.

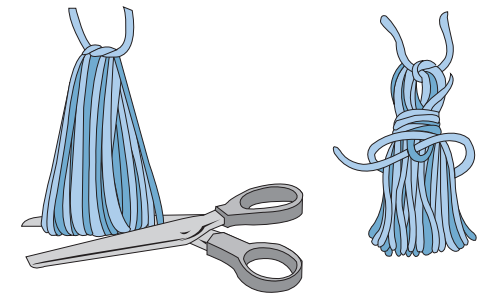
Outer Edging: Rnd 1: (RS). Join A with sl st at any corner to work around Afghan. Ch 1. Work sc evenly around 4 sides of Afghan, working (2 sc. Ch 2. 2 sc) in each corner. Join with sl st to first sc. Fasten off.

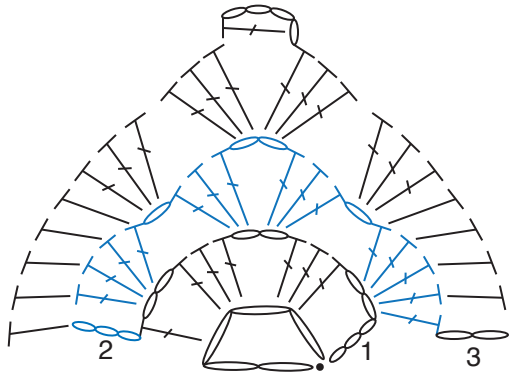
Bottom Edging: 1st row: (WS). Join A with sl st at corner to work along bottom edge of Afghan. Ch 1. 2 sc in corner. 1 sc in each sc to last corner. 2 sc in corner. Turn.

2nd row: (RS). Ch 1. 1 sc in each sc to end of row. Fasten off.

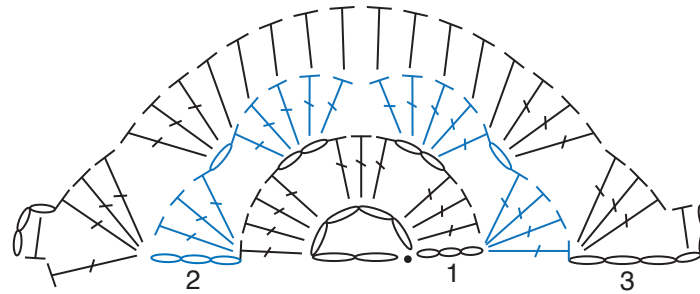
Top Edging: Work as for Bottom Edging across top edge.

Tassels (make 16): Wind A around a piece of cardboard 6" [15 cm] wide 20 times. Tie through loops securely at one end. Cut loops on opposite end. Wrap yarn 3 times around Tassel 1" [2.5 cm] down from tied end. Fasten securely. Sew Tassels, aligned with points of Ogee Motifs, along Top and Bottom edges of Afghan as seen in picture.

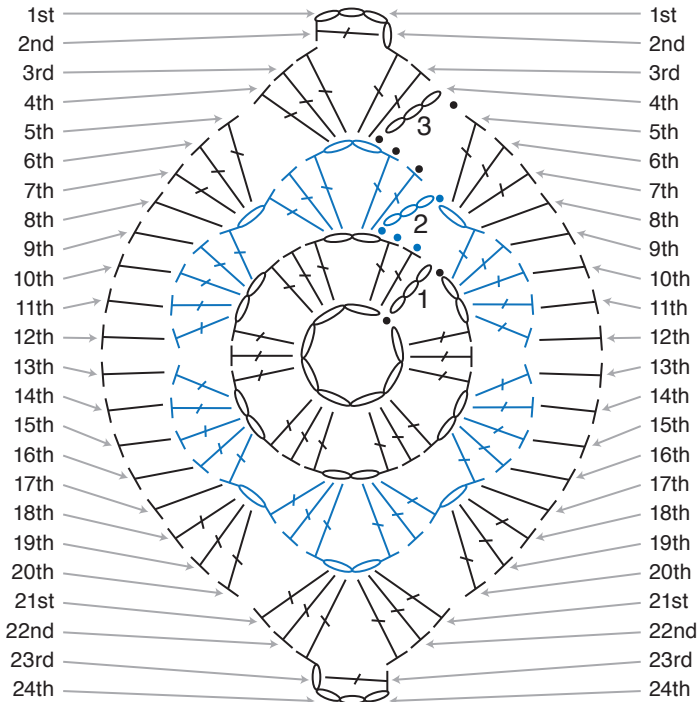




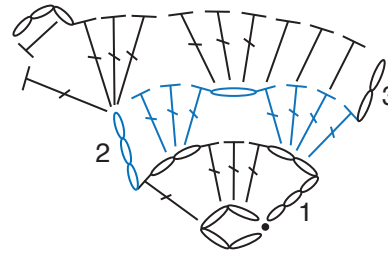
SHORT HALF OGEE MOTIF



LONG HALF OGEE MOTIF

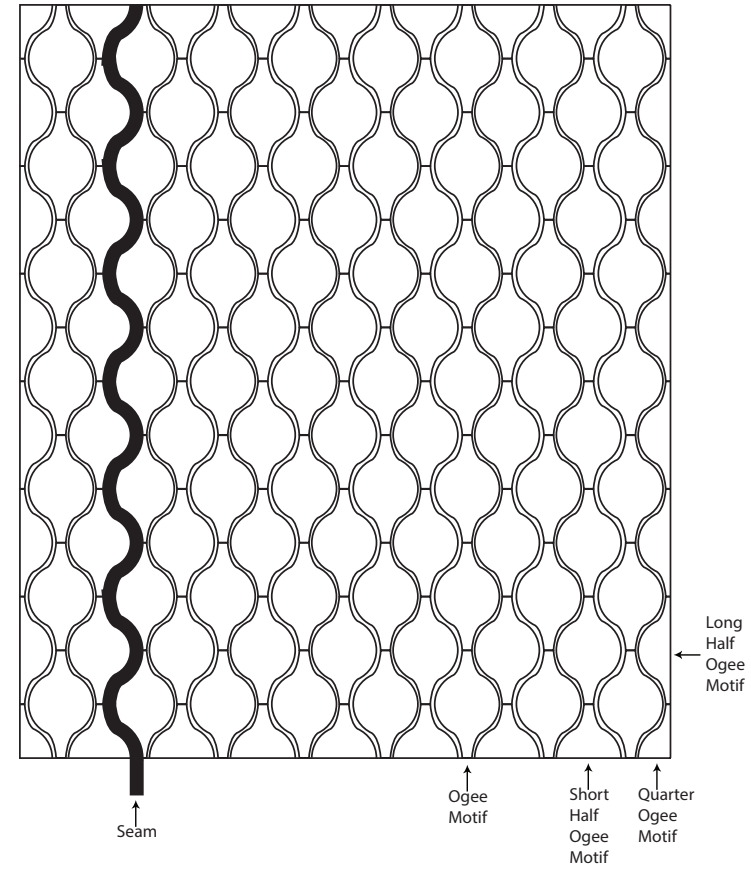


OGEE MOTIF



QUARTER OGEE MOTIF

- STITCH KEY
- = chain (ch)
 - = slip stitch (sl st)
 - ┆ = half double crochet (hdc)
 - ┆ = double crochet (dc)



ASSEMBLY DIAGRAM
(Seam Vertically)